

DF DENT PREMIER GROWTH FUND

AS OF JUNE 30, 2010

D.F. Dent & Company, Inc.

2 East Read Street

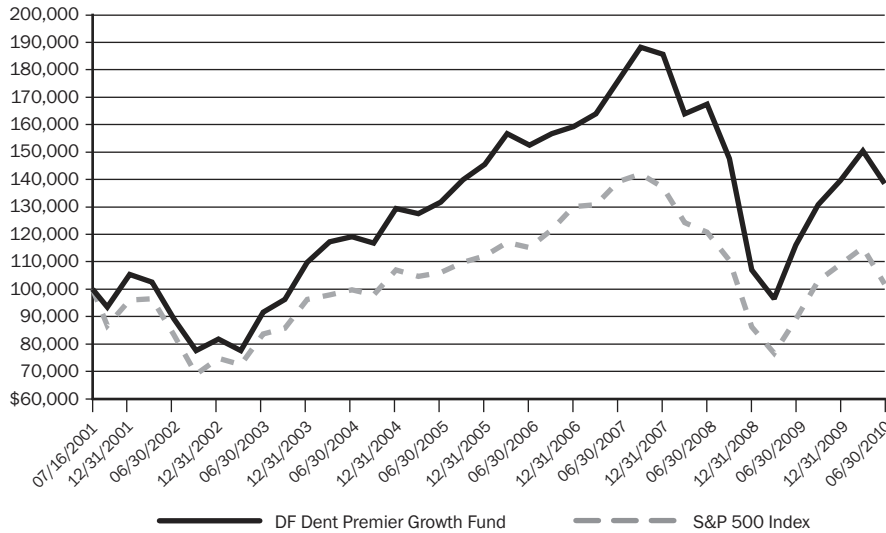
Baltimore, Maryland 21202

Toll Free 866.2DF.DENT (866.233.3368)

GROWTH OF A \$100,000 INVESTMENT

Investment Value

DF Dent Premier Growth Fund	\$138,195
S&P 500 Index	\$101,808



Past performance is not reflective of future performance. Performance shown in the Growth of \$100,000 chart represents a hypothetical investment initiated at the beginning of the time period shown. The total return of the Fund includes operating expenses that reduce returns, while the Index returns do not include expenses.

INVESTMENT STRATEGIES

The Fund invests primarily in equity securities of domestic companies that possess superior long-term growth characteristics and that have strong, sustainable earnings prospects and reasonably valued stock prices. The Fund may also invest in companies that do not have particularly strong earnings histories but do have other attributes that may contribute to accelerated growth in the foreseeable future. The Fund primarily invests in medium and large size domestic companies. Medium size companies typically have market capitalizations in the range of \$1.5 billion to \$7 billion. Large companies typically have market capitalizations greater than \$7 billion.

FUND MANAGEMENT

D.F. Dent & Company, Inc. is a registered investment adviser and has provided investment advisory and management services to clients since 1976. As of June 30, 2010, D.F. Dent had approximately \$2.75 billion in assets under management. The firm is 100% owned by its six principals and is unaffiliated with any other investment organization. The management team at D.F. Dent & Company, Inc. consists of Dan Dent, CFA, Tom O'Neil, CFA, Linda McCleary, Matt Dent, CFA, Mike Morrill, Gary Mitchell, J.D. and Bruce Kennedy, CFA. For more information on the firm please visit our web site (www.dfdent.com).

MINIMUM INVESTMENTS

	Minimum Initial Investment	Minimum Additional Investment
Standard Accounts	\$100,000	\$2,000
Traditional and Roth IRA Accounts	\$100,000	\$1,000
Accounts with Systematic Investment Plans	\$100,000	\$1,000

Investing involves risks, including the possible loss of principal. The Fund invests in small and medium size companies. Investments in these companies, especially smaller companies, carry greater risk than is customarily associated with larger companies for various reasons such as increased volatility of earnings and prospects, narrower markets, limited financial resources and less liquid stock. The Fund will typically invest in the securities of fewer issuers. If the Fund's portfolio is over weighted in a sector, any negative development affecting that sector will have a greater impact on the Fund than a fund that is not over weighted in that sector.

The S&P 500 Index is a broad-based, unmanaged measurement of changes in stock market conditions based on the average of 500 widely held stocks. One cannot invest directly in an index. Foreside Fund Services, LLC, Distributor.

Before investing you should carefully consider the Fund's investment objectives, risks, charges and expenses. This and other information is in the prospectus, a copy of which may be obtained by calling 866.233.3368. Please read the prospectus carefully before you invest.

TOP FIVE COMMON STOCK HOLDINGS

	% of Net Assets
Fastenal Co.	8.73%
IDEXX Laboratories, Inc.	8.52%
Expeditors International of Washington, Inc.	5.58%
QUALCOMM, Inc.	5.18%
Roper Industries, Inc.	4.98%

TOTAL RETURNS (PERIODS OVER 1 YEAR ARE ANNUALIZED)

Year-to-Date	(0.84)%
1 Year	19.29%
3 Year	(7.67)%
5 Year	1.01%
Inception to Date	3.68%

Performance data quoted represents past performance and is no guarantee of future results. Current performance may be lower or higher than the performance data quoted. Investment return and principal value will fluctuate so that an investor's shares, when redeemed, may be worth more or less than original cost. Historically, some of the Fund's fees were waived or expenses reimbursed; otherwise, returns would have been lower. For the most recent month-end performance, please call 866.233.3368.

The recent growth rate in the global equity markets has helped to produce short-term returns for some sectors/asset classes that are not typical and may not continue in the future. Because of ongoing market volatility, Fund performance may be subject to substantial short-term changes.

FUND STATISTICS

NAV	\$13.05
TICKER SYMBOL	DFDPX
CUSIP	349903419
TOTAL NET ASSETS	\$124 million
OBJECTIVE	Long Term Capital Appreciation
INCEPTION DATE	July 16, 2001
EXPENSE RATIO (NET)	1.10%
EXPENSE RATIO (GROSS)	1.26%
FUND TURNOVER RATE	8%
MID-CAP GROWTH CATEGORY TURNOVER RATE	125%
SALES CHARGE	None
MANAGER WEB SITE	www.dfdent.com

¹The Fund's adviser has agreed contractually to waive a portion of its fees and/or reimburse expenses to cap the expense ratio until October 31, 2010.

STYLE

	Value	Blend	Growth	
				Large
				Medium
				Small